

next

FESTIVAL 2025

THEATER
LATTÉ
DA

THEATER MUSICALLY

THE HOMEFRONT



Music & Lyrics by **Sam Salmond**
Book by **Malika Oyetimein** and
Jenny Stafford

Presentations:

Friday, July 25 at 4:00pm

Monday, July 28 at 7:30pm



When World War II comes to a close and the men return home, the women are immediately fired from their jobs at the factory. Two best friends—one black and one white—lead a movement to fight for the jobs of their fellow female workers. But when their progressive ideals fall short and it becomes clear that the black women and the white women will no longer have the same opportunities in this post-war world, they have to decide what – and who – they are willing to give up

in the fight, and what happens when loved ones get caught in the crossfire.

HOW TO PLAY THE CELLO (UNTIL YOU DONT)

Book, Music & Lyrics by
Benjamin Emory Larson

Presentations:

Friday, August 1 at 4:00pm

Monday, August 4 at 7:30pm



How to Play the Cello (Until You Don't) is loosely based on the life of Jacqueline Du Pré, one of the greatest cellists of all time, whose career was cut short in her 30s by Multiple Sclerosis. Through original songs and reimagined classical pieces Jackie guides us on the explosive journey of her life. She discovers the cello for the first time, falls in love with it, finds out she's "talented," becomes obsessed with greatness, conquers the world, falls ill, loses her ability to play, and ultimately has to face the question: what is an artist who can't make art anymore?



SCAN TO LEARN MORE & BUY TICKETS

OKUNI

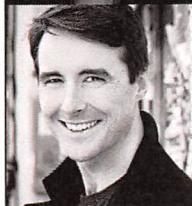


Book by **Naomi Iizuka & Paul Hodge**
Lyrics by **Paul Hodge & Naomi Iizuka**
Music by **Paul Hodge**

Presentations:

Friday, August 8 at 4:00pm

Monday, August 11 at 7:30pm



Okuni tells the story of the enigmatic woman from 16th century Japan who created Kabuki and has since been forgotten by history. The pop culture sensation of her day, Okuni went from performing for outcasts in the dry riverbeds of Kyoto to performing for the shogun himself. Challenging conventions of polite society and shining a light on the hypocrisies of the ruling class, her shows were as politically dangerous as they were erotic. *Okuni* asks what it means to be a woman in a man's world, and what it means to make art when the world is burning.

Support for Theater Latté Da's NEXT Festival comes from:

NAMT
NATIONAL ALLIANCE FOR
MUSICAL THEATRE



M A P F U N D

The Nara Fund



NATIONAL
ENDOWMENT for the **ARTS**

arts.gov

Jennifer Melin Miller and David Miller