

# nautilus music-theater

---

## ROUGH CUTS

OPEN REHEARSAL: Monday, March 16

featuring the work of writers SARA BROWNSON, JIM PAYNE, DANIEL REIVA, and JOSIAH THOMAS TURNER; composers CHARLES BETZ, ROBERT ELHAI, MARYA HART, BENJAMIN EMORY LARSON, ANDREA LEAP, YAN PANG, KEN TAKATA, and BRENDA VARDA — as performed by JAKE ENDRES, YVONNE FREESE, VANESSA GAMBLE, DANIEL GRECO, NORAH LONG, JOSHUA ROW, MOMOKO TANNO, with musical director SONJA THOMPSON

Works rehearsed, not in this order:

**"BUT MOST OF ALL"**

by Sara and Andrea, featuring Daniel,  
with Momoko, Vanessa, and Norah

"Best for Her" from **FIVE MINUTES ON THE LOW ROAD**  
by Josiah and Charles, featuring Josh and Jake

"This Side of Tomorrow" from **FIVE MINUTES ON THE LOW ROAD**  
by Josiah and Charles, featuring Norah

**"WE WON'T HAVE TO DO A THING"**

by Brenda Varda, featuring Yvonne and Jake

**"THE SWALLOW BIRD"**

by Yan Pang, featuring Yvonne and Momoko

**"Excerpt from THE MPLIAD**

by Dan Rieva, featuring Yvonne and Jake

**"LAMENTO"**

by Marya Hart, featuring Norah

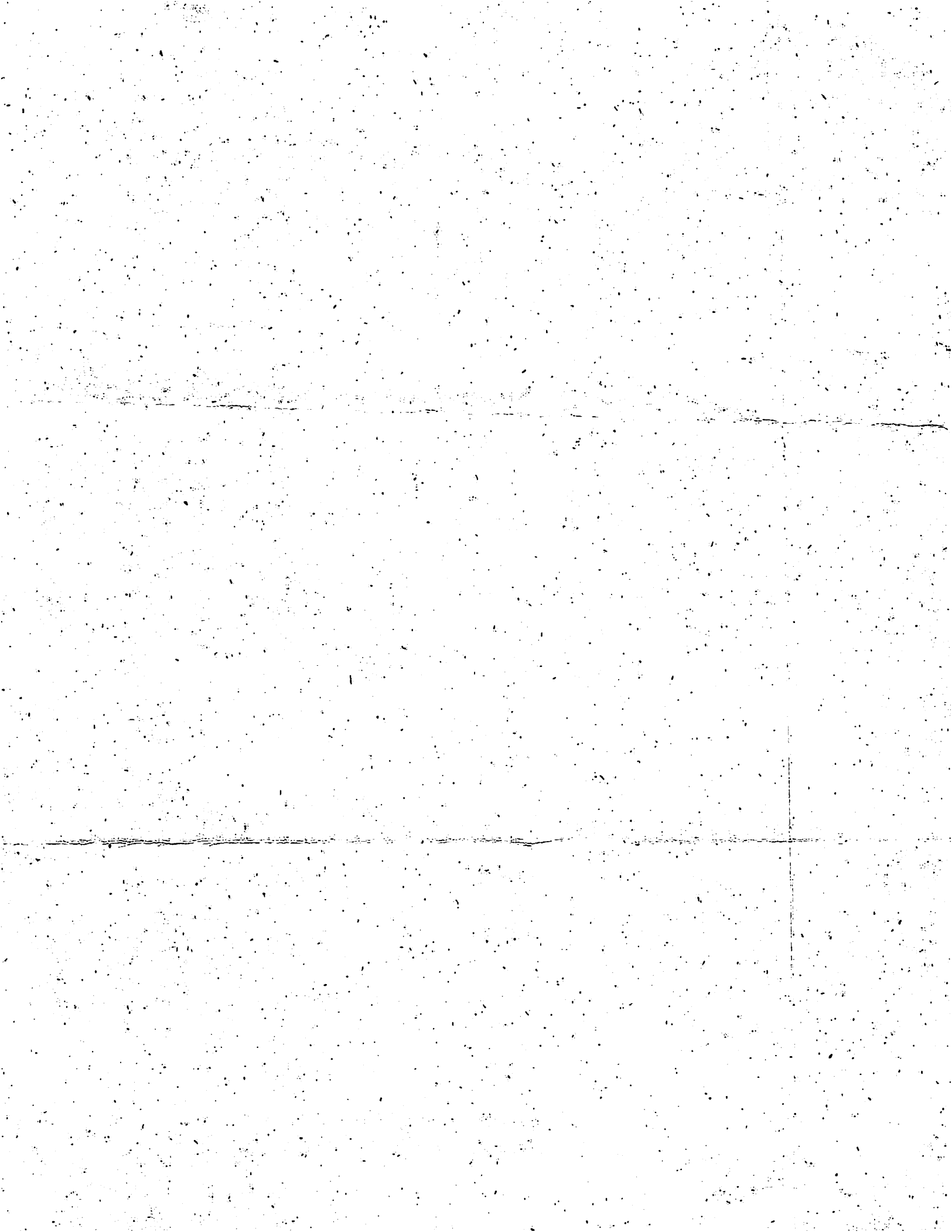
**"SONNET 18"**

by Ken Takata, featuring Yvonne, Momoko, Josh, and Jake

"Our Divided Hearts" from **A SONG AT TWILIGHT**  
by Jim and Robert, featuring Vanessa and Daniel

"Funeral Scene" from **A SONG AT TWILIGHT**  
by Jim and Robert, featuring Josh and Daniel

"You're Not Alone" from **BENEATH THE ICE**  
by Ben L, featuring Daniel



**NEXT TIME:** excerpts from  
 "Chopin's Heart", by GARY RUE and  
 DAN PINKERTON, performed by PRUDENCE  
 JOHNSON, JENNIFER GRIMM, and MAUD  
 HIXSON, with DAN CHOUINARD on piano  
 and RANDY SABIEN  
 on violin) **APRIL 13 AND 14**

We hope you enjoy tonight's ROUGH CUTS -- for over two decades, we have presented over 215 programs of new and innovative music-theater, performed by some of the twin cities' most exciting performers -- during that time, we have slowly gained a reputation for guaranteeing an inexpensive, high quality, and provocative musical-theatrical event, combined with the comforts of free cookies and milk -- of course, such an experience costs far more to produce than our ridiculously low admission of ten dollars, and so we turn to all of you for assistance -- as we continue with our twenty-eighth year of presentation, please consider a financial contribution -- you could help us pay performers, rent equipment, finance mailings, hire musicians, or develop artists -- go to our page at [www.givemn.org](http://www.givemn.org) and make an online contribution, or feel free to drop a bit of cash (or check -- remember checks?) into the box on your way out -- and if you're interested in commissioning a new piece, (especially from emerging artists), come talk to us -- we'll all sleep a bit better, knowing that you are helping to make the world a little safer for new opera and music-theater!

**nautilus**  
 music-theater

**BOARD OF DIRECTORS:**

sarah johnson, ben krywosz,  
 kate hujda, tina meckel, and james payne  
 308 prince street #190 saint paul mn 55101  
 (651) 298-9913 · [staffnautilusmusictheater.org](http://staffnautilusmusictheater.org)  
 - follow us on TWITTER at [anautilusMT](https://twitter.com/anautilusMT) and  
 become a fan on our FACEBOOK page!

**ROUGH CUTS** is supported by generous grants from the mcknight foundation, the st paul cultural star program, the metropolitan regional arts council through the arts and cultural heritage fund as appropriated by the minnesota state legislature with money from the legacy amendment vote of the people of minnesota on november 4, 2008 -- and of course, by tax-deductible donations from satisfied audience members like you!



**CLEAN  
 WATER  
 LAND &  
 LEGACY  
 AMENDMENT**

**nautilus**  
 music-theater

**ROUGH  
 CUTS**

**MONDAY MARCH 16**  
 OPEN REHEARSAL AT NAUTILUS  
 STUDIO AT 7:30PM  
**TUESDAY MARCH 17**  
 UNIVERSITY OF ST THOMAS  
 AT 7:30PM

**NEW MUSICAL  
 STORYTELLING**

excerpts from writers SARA BROWNSON,  
 JIM PAYNE, DANIEL REIVA, and  
 JOSIAH THOMAS TURNER, composers  
 CHARLES BETZ, ROBERT ELHAI,  
 MARYA HART, BENJAMIN EMORY LARSON,  
 ANDREA LEAP, YAN PANG, KEN TAKATA,  
 and BRENDA VARDA -- as performed by  
 JAKE ENDRES, YVONNE FREESE, VANESSA  
 GAMBLE, DANIEL GRECO, NORAH LONG,  
 JOSHUA ROW, MOMOKO TANNO, with  
 musical director SONJA THOMPSON

# nautilus music-theater

---

## NEW MUSICAL STORYTELLING

excerpts from  
works-in-progress

### WRITERS:

SARA BROWNSON  
JIM PAYNE  
DANIEL REIVA  
JOSIAH THOMAS TURNER

### COMPOSERS:

CHARLES BETZ  
ROBERT ELHAI  
MARYA HART  
BENJAMIN EMORY LARSON  
ANDREA LEAP  
YAN PANG  
KEN TAKATA  
BRENDA VARDA

### CAST:

JAKE ENDRES  
YVONNE FREESE  
VANESSA GAMBLE  
DANIEL GRECO  
NORAH LONG  
JOSHUA ROW  
MOMOKO TANNO

### MUSICAL DIRECTOR:

SONJA THOMPSON

---

all of the artists in tonight's wonderfully diverse program have participated in nautilus's professional development programs – either our wesley balk opera/music-theater institute, our composer-librettist studio, rough cuts, or fully staged productions – we are delighted to continue contributing to their creative work!

## PROGRAM:

"WE WON'T HAVE TO DO A THING"  
by Brenda Varda, featuring  
Yvonne and Jake

"Best for Her" from  
**FIVE MINUTES ON THE LOW ROAD**  
by Josiah and Charles,  
featuring Josh and Jake

"This Side of Tomorrow" from  
**FIVE MINUTES ON THE LOW ROAD**  
by Josiah and Charles,  
featuring Norah

"Excerpt from **THE MPLIAD**  
by Dan Rieva, featuring  
Yvonne and Jake

"You're Not Alone" from  
**BENEATH THE ICE**  
by Benjamin, featuring Daniel

"**BUT MOST OF ALL**"  
by Sara and Andrea, featuring  
Daniel, with Momoko,  
Vanessa, and Norah

---

## INTERMISSION

---

"**SONNET 18**"  
by Ken Takata, featuring  
Yvonne, Momoko, Josh, and Jake

"**LAMENTO**"  
by Marya Hart,  
featuring Norah

"Our Divided Hearts" from  
**A SONG AT TWILIGHT**  
by Jim and Robert,  
featuring Vanessa and Daniel

"Funeral Scene" from  
**A SONG AT TWILIGHT**  
by Jim and Robert,  
featuring Josh and Daniel

"**THE SWALLOW BIRD**"  
by Yan Pang,  
featuring Yvonne and Momoko